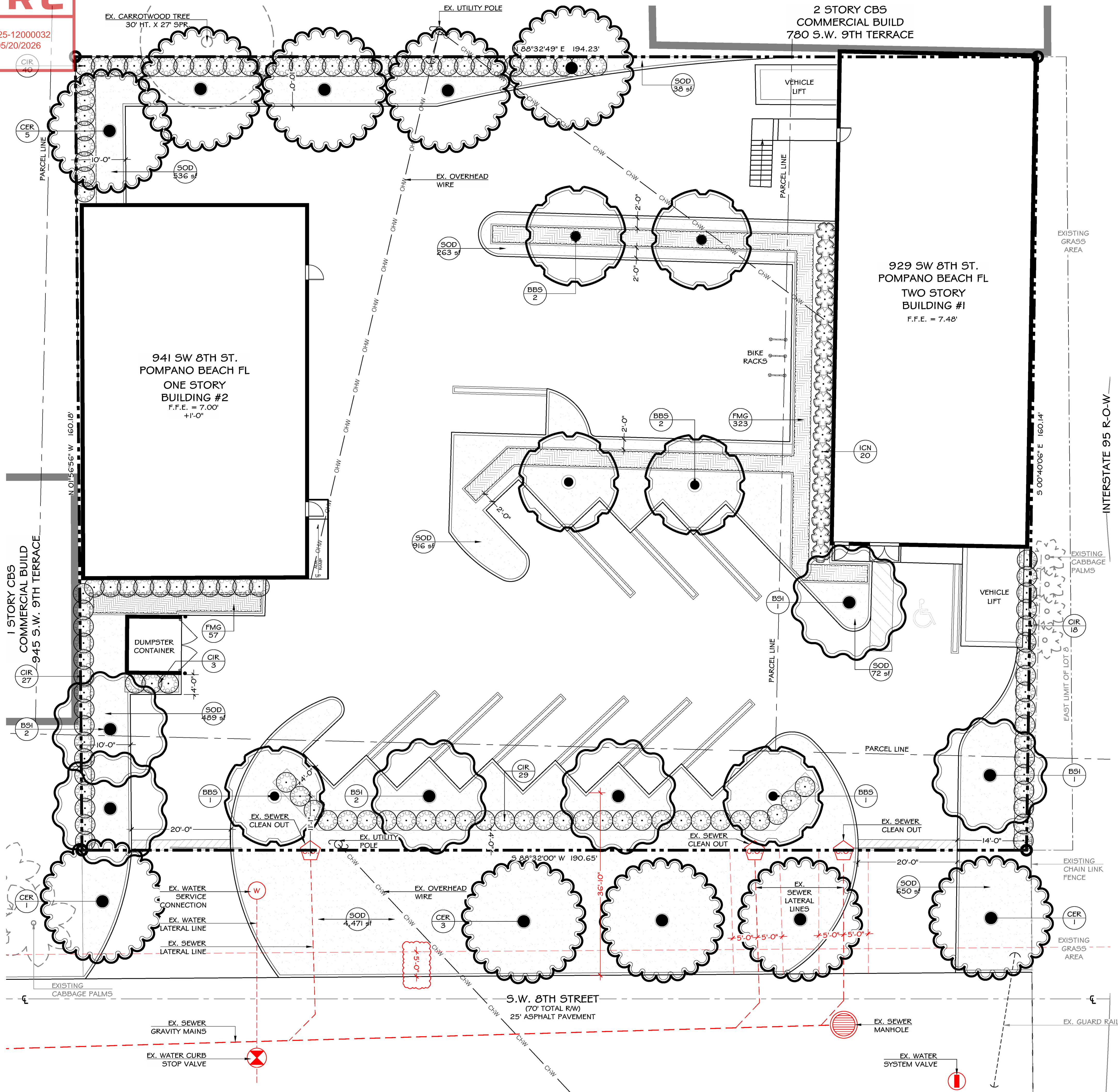
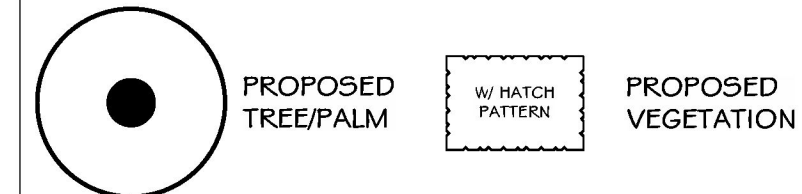


DRC

PZ25-12000032  
05/20/2026

## PLANT SYMBOL KEY



## LIGHTING NOTES

1. REMOVE ALL LIGHTING ON LANDSCAPE AREAS.

## PLANTS SCHEDULE

CODE	QTY	BOTANICAL NAME	COMMON NAME	SPECIFICATION	REMARKS
TREES					
BBS	6	BUCIDA BUCERAS 'SHADY LADY'	BLACK OLIVE 'SHADY LADY'	16' HT., O.A., 2" CAL.	FLORIDA #1
BSI	6	BURSERA SIMARUBA	GUMBO LIMBO	16' HT., O.A., 2" CAL.	FLORIDA #1
CER	10	CONOCARPUS ERECTUS	GREEN BUTTWOOD	16' HT., O.A., 2" CAL.	FLORIDA #1
HEDGES					
CIR	117	CHRYSOBALANUS ICACO 'RED TIP'	COCOPLUM	2' HT.	FLORIDA #1
SHRUBS & GROUNDCOVERS					
ICN	20	IXORA COCCINEA 'NORA GRANT'	FLAME OF THE WOODS	3 GAL.	FLORIDA #1
FMG	380	FICUS MICROCARPA 'GREEN ISLAND'	FICUS 'GREEN ISLAND'	7 GAL.	FLORIDA #1
SOD					
SOD	7,435 SF	STENOTAPHRUM SECUNDATUM 'FLORATAM'	ST. AUGUSTINE 'FLORATAM'	---	
MULCH					
PMX	2,738 SF	BROWN MULCH		2 CU FT BAG	
EDGING					
	255 LF	PERMALOCK ALUMINUM EDGING		4" X 16 LF / STICK	

## LANDSCAPE REQUIREMENTS

PROJECT LOCATION	941 & 929 SW 8ST
ZONING DISTRICT	I-1 (GENERAL INDUSTRIAL)
STREET TREES: 1 STREET TREES PER 40 LF	
TOTAL LF: 150'	
REQUIRED: 3.75 TREES	
PROVIDED: 4 TREES	
BUILDING WALL COVERAGE:	
REQUIRED: 5-FT-WIDE LANDSCAPED AREA NEXT TO BUILDING WALL FACING PUBLIC STREET. INCLUDE CONTINUOUS HEDGE OR 1 TREE PER 40 LINEAR FEET.	
PROVIDED: 5-FT STRIP WITH 24" HT HEDGE ALONG BUILDING	
PARKING AREA / DRIVEWAY	REQUIRED
	LANDSCAPE STRIP: 5-FT-WIDE LANDSCAPE STRIP BETWEEN PARKING OR DRIVEWAY AND STREET LOT LINE.
	HEDGE: CONTINUOUS HEDGE AT LEAST 24 INCHES HIGH AT PLANTING.
	TREES: 1 TREE PER 30 LINEAR FEET ALONG LANDSCAPE STRIP.
	GROUND COVER: GRASS OR OTHER GROUND COVER IN REMAINING AREAS OF LANDSCAPE STRIP
PARKING AREA / DRIVEWAY	PROVIDED
	A COMBINATION OF 24" HT COCOPLUM HEDGE AND 6" HT LIRIOPE WAS ADDED IN FRONT OF THE BUILDING CREATING A 5' WIDE LANDSCAPE STRIP REFER TO SHEET LI
	A CONTINUOUS HEDGE OF COCOPLUM 24" HT WAS ADDED IN FRONT OF THE PARKING AREA ADJACENT TO THE ROAD REFER TO SHEET LI
	TOTAL LF: 150'
	REQUIRED: 5 TREES
	PROVIDED: 7 TREES
	ST. AUGUSTINE TURF WAS ADDED IN REMAINING AREAS OF LANDSCAPE STRIP REFER TO LI
	A CONTINUOUS HEDGE OF COCOPLUM 24" HT WAS ADDED IN FRONT THE MECHANICAL EQUIPMENT - REFER TO LI
MECHANICAL EQUIPMENT SCREENING: GROUND-MOUNTED MECHANICAL EQUIPMENT SCREENED PER SECTION 155.5301.A.2.	
TABLE 155.5203.C: MINIMUM DEVELOPMENT SITE LANDSCAPING	
LOT TYPE AND SIZE	BASE ZONING DISTRICT: I-1 (GENERAL INDUSTRIAL)
OTHER LOTS NO MORE THAN 7,000 SQFT IN AREA	1 TREE AND 5 SHRUBS PER 3,000 SQ FT OF LOT AREA OR MAJOR FRACTION THEREOF
941 SW 8TH STREET TOTAL SQFT: 23,972 SQFT	REQUIRED: 10.30 TREES
929 SW 8TH STREET TOTAL SQFT: 6,937 SQFT	PROVIDED: 21 TREES
TOTAL SQFT: 30,909 SQFT	

## GENERAL NOTES

- ALL TREES DESIGNATED AS SINGLE TRUNK SHALL HAVE A SINGLE, RELATIVELY STRAIGHT, DOMINANT LEADER, PROPER STRUCTURAL BRANCHING AND EVEN BRANCH DISTRIBUTION. TREES WITH BARK INCLUSION, TIPPED BRANCHES AND CO-DOMINANT TRUNKS WILL NOT BE ACCEPTED. TREES WITH GIRDLING, INTACT LEADER CIRCLING AND / OR PLUNGING ROOTS WILL BE REJECTED.
- PRE CONSTRUCTION MEETING WITH URBAN FORESTRY IS REQUIRED BEFORE ANY WORK IS PERFORMED ON SITE. WHERE THERE IS TREE PROTECTION AND / OR PLANT MATERIAL IS INSTALLED ON SITE.
- ALL ROAD WORK, CONCRETE, ASPHALT AND OTHER NON NATURAL MATERIAL BE REMOVED FROM ALL PLANTING AREAS PRIOR TO LANDSCAPE INSTALLATION AND BE REPLACED WITH PLANTING SOIL PRIOR TO LANDSCAPE INSTALLATION.
- AS PER CITY ORDINANCE(S) 50.02 (A) (4) AND 100.35 (E), STREET TREES SHALL NOT BE PLACED ON TOP OF OR 5' OF EITHER SIDE OF ANY CITY OWNED UTILITY INFRASTRUCTURE.
- NO TREES, SHRUBBERY OR OBSTRUCTION SHALL BE PLACED WITHIN A 3' RADIUS OF CITY OWNED SEWER LATERAL CLEAN OUT OR WATER AND / OR REUSE METER.
- ALL HEDGES ABUTTING CITY RIGHTS OF WAY ARE MAINTAINED AT A HEIGHT NO GREATER THAN 24". IT IS STAFFS RECOMMENDATION THAT ALL TREES VUA PERIMETER TREES BE 14" OA TO CREATE A LARGEST CPED CLEAR LINE OF SIGHT FROM ROADWAY.

# THE NEW AUTO TOY STORE

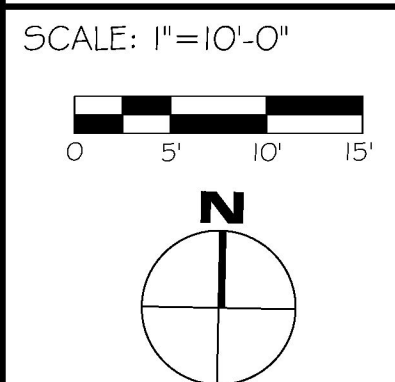
941 & 929 S.W. 8TH STREET  
POMPANO BEACH, FL 33069

## LANDSCAPE PLAN

DATE: 11/18/25  
DESIGNER: MH  
CAD: LC

PROJECT NO.:  
**22-026**

REVISION: R6



DRAWING CODE:  
**LI**

SHEET NO.:  
**02 OF 05**

**M Hudson**  
DESIGN

601 Heritage Drive, Suite 212, Jupiter, FL 33458  
561-319-2474 | MHudsonDesign.com